

Key to female Andrenas

1. Vast majority of facial hairs black. **2**
- Vast majority of facial hairs pale. **6**
2. Hairs on top hind tibiae very dark brown or black (Fig. 1). – *Andrena carantonica*
- Hairs on top of hind tibiae golden-yellow (Fig. 3). **3**
3. Abdomen covered in dense black hair. – *Andrena clarkella*
- Abdomen not covered in dense black hair. **4**
4. Hairs in dorsal surface of hind tibiae dark brown/black (Fig. 2). – *Andrena lapponica*
- All hairs on tibiae pale. **5**
5. Base of thorax covered with dense, orange hairs, giving insect a 'fuzz ball' appearance. Large, robust bee. (Fig. 3) – *Andrena nigroaenea*
- Very little orange hair; a much less hairy bee (Fig. 4). – *Andrena bicolor*
6. Lots of black hairs on mesonotum. **7**
- Few if any black hairs on mesonotum. **8**
7. Hind tibiae black. – *Andrena denticulata*
- Hind tibiae yellow (Fig. 5). – *Andrena tarsata*
8. Small, black bee with largely bald abdomen. Surface of hind tibiae black (Fig. 6). **9**
- Bee larger and hairier. Surface of hind tibiae yellow or black. **12**
9. Hairs on hind tibiae dirty brown (Fig. 6). – *Andrena coitana*
- Hairs on hind tibiae whitish. **10**
10. 2nd and 3rd tergites with deeply indented marginal areas (Fig. 7). – *Andrena semilaevis*
- 2nd and 3rd tergites without deeply indented marginal areas. **11**
11. Centre of mesonotum with dense punctures (several of which are less than a puncture's width apart). Surface between punctures grainy. – *Andrena subopaca*
- Centre of mesonotum with well-spaced punctures (all of which are more than a puncture's width apart). Space between punctures smooth. – *Andrena minutula*
12. Large, distinctive grey and black banded species (Fig. 8). – *Andrena cineraria*
- Not this species. **13**
13. Large, chunky, distinctively coloured with orange hair all over thorax and abdomen (Fig. 9). – *Andrena fulva*
- Not this species. **14**
14. Hind tibiae with hair fringe very dark at base, fading to white at tip (Fig. 10). [Felt-like facial foveae.] – *Andrena barbilarbris*
- Hind tibiae otherwise. **15**
15. Scopa yellow/orange. **16**
- Scopa dark brown. **22**
16. Deep rusty red hairs on thorax and tip of bald abdomen, contrasting with bald, black abdomen (Fig. 11). *Andrena haemorrhoea*.
- Not this species. **17**

Fig. 1 *A. carantonica*



Fig. 2 *A. lapponica*

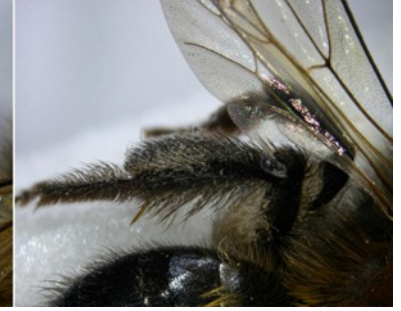


Fig. 3 *A. nigroaenea*



Fig. 4 *A. bicolor*



Fig. 5. *A. tarsata*



Fig. 6. Small, black Andrena



Fig. 7. *A. semilaevis*



Fig. 8. *A. cineraria*



Fig. 9. *A. fulva*



Fig. 10. *A. barbilarbris*



Fig. 11. *A. haemorrhoea*



Fig. 12. *A. similis*



17. Hair bands across abdomen. **18**
- No hair bands across abdomen. **19**

18. Scutellum covered in dense, reddish hair (Fig. 12)(Beware worn specimens with abraded hairs). – *Andrena similis*
- Scutellum largely hairless. – *Andrena wilkella*

19. 5th antennal segment much longer than broad. **20**
- 5th antennal segment not obviously longer than broad. **21**

20. Abdomen very hairy (Fig. 13). – *Andrena helvola*
- Abdomen not like this (Fig. 14). – *Andrena fucata*

21. Abdomen essentially bald (Fig. 15). – *Andrena ruficrus*
- Abdomen hairy. – *Andrena angustior*

22. Broad, apical depressions on tergites 3 and 4 which take up most of the width of the tergites (Fig. 16). – *Andrena synadelpha*.
- Apical depressions take up less than half the width of the tergites. **23**

23. Abdomen largely bald, but with several partial, thin, dense hair bands (Fig. 6). – *Andrena coitana*
- Bee without hair bands. **24**

24. Very long hairs on tergites, including tergites 3 and 4(Fig. 17). – *Andrena praecox*
- Sometimes long hairs present on tergites 1 and 2, but never on tergites 3 and 4 (Fig. 14). – *Andrena fucata*

Fig. 13 *A. helvola*



Fig. 14 *A. fucata*



Fig. 15 *A. ruficrus*



Fig. 16 *A. synadelpha*



Fig. 17 *A. praecox*



Key to male Andrenas

1. Surface of clypeus white or yellow (Fig. 1). **2**
- Surface of clypeus black. **5**
2. Front corners of clypeus have each have a small 'tooth' (Fig. 1). – *Andrena marginata*
- Front corners of clypeus without teeth. **3**
3. Mesonotum and scutellum polished between punctures. **4**
- Mesonotum and scutellum rough between punctures. – *Andrena chrysosceles*
4. Hind tarsi yellow (Fig. 2). – *Andrena tarsata*
- Hind tarsi dark. – *Andrena coitana*
5. Top of propodeum very coarsely rugose, contrasting with the much less coarse surface on the rest of the propodeum (Fig. 3). – *Andrena haemorrhoa*
- Propodeum without this area of extreme coarseness on top (Fig. 4). **6**
6. Black hairs on some of clypeus, even if only at sides. **7**
- No black hairs on clypeus. **10**
7. Black hairs only at sides of face. **8**
- Black hairs all over clypeus. **11**
8. Hind legs at least partly pale (maybe only as small patch). **9**
- Hind legs dark. **10**
9. Lots of black hairs on side of clypeus. – *Andrena clarkella*
- Black hairs restricted to thin on inner edge of eye. – *Andrena ruficrus*
10. Grey hairs on thorax. – *Andrena cineraria*
- Brown hairs on thorax. – *Andrena angustior*
11. Dark hairs on most of hind tibiae. – *Andrena carantonica*
- Hairs on hind tibiae golden. **12**
12. Top of head sculptured with longitudinal lines – *Andrena nigroaenea*
- Top of head without such lines – *Andrena bicolor*
13. Definite abdominal bands on abdomen (Figs. 6, 7, 8). **13**
- No hair bands on abdomen. **14**
14. Labrum with distinct notch. (Fig. 5) – *Andrena denticulata*
- Labrum without distinct notch. - **15**
15. Antennal segment 3 is 1.5X as long as segment 4 (Fig. 17). **16**
Antennal segment 3 is about equal in length to segment 4. **17**
16. Sides of thorax with dense white hairs – *Andrena barbilabris*
Sides of thorax with pale brown hairs – *Andrena angustior*
17. Abdominal hair bands with short hairs (Fig. 7). – *Andrena wilkella*
- Abdominal hair bands with longer hairs (Fig. 8). – *Andrena fuscipes*
18. Angular tooth on lower margin of base of mandible (Figs. 9 and 10). **19**
- Mandibles without distinct tooth. **23**

Fig.1 A. marginata



Fig. 2 A. tarsata



Fig. 3 A. haemorrhoa



Fig. 4



Fig. 5 A. denticulata

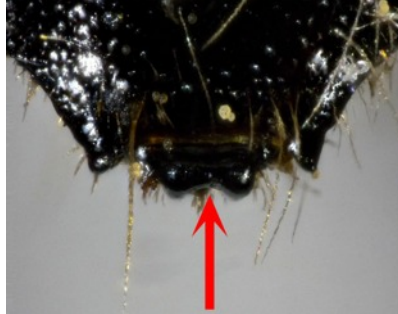


Fig. 6 A. denticulata



Fig. 7 A. wilkella

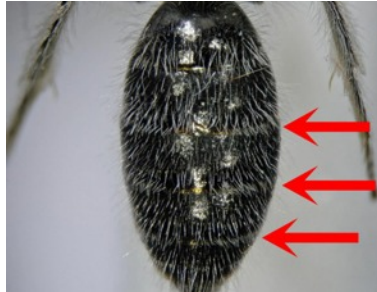


Fig. 8 A. fuscipes



Fig. 9 A. lapponica



Fig.10 A. fucata



20. Propodeum with many black hairs (Fig. 11). – *Andrena praecox*

- Propodeum with pale orange hairs – no black. **21**

21. Hind tarsi dark (Fig. 12). – *Andrena lapponica*.

- Hind tarsi yellow/orange. **22**

22. Lots of ginger hair on top of abdomen (Fig. 13).

– *Andrena helvola*

- Abdomen not like this. – *Andrena fucata*

23. Abdomen with long pale hairs on tergites 1 and 2 (Fig. 15).

– *Andrena synadelpha*

- Abdomen not like this. **24**

24. Very small bee. Tergite 2 with minute hairs. **25**

- Not very small bee. Tergite 2 with long hairs. **27**

25. 2nd and 3rd sternites with deeply indented marginal areas (Fig. 16). – *Andrena semilaevis*

- Marginal areas not deeply indented. **26**

26. Scutellum polished between punctures. – *Andrena minutula*.

- Scutellum coarse between punctures. – *Andrena subopaca*.

27. Lots of hair on all tergites. – *Andrena nigriceps*

- Tergites much less hairy. **28**

28. Antennal segment 3 as long as segments 4 & 5 combined (Fig. 17). – *Andrena angustior*

- Antennal segment 3 not as long as segments 4 & 5 combined (Fig. 18). – *Andrena similis*

Fig.11 *A. praecox*



Fig. 12 *A. lapponica*



Fig. 13 *A. helvola*



Fig. 14 *A. fucata*



Fig. 15 *A. synadelpha*



Fig. 16 *A. semilaevis*



Fig. 17 *A. angustior*



Fig.18 *A. similis*

